



STATISTICS PACKAGE

www.unhcr.ba


Sarajevo

31 March 2004

**SUMMARY OF RECORDED RETURNS OF DISPLACED PERSONS
WITHIN BOSNIA AND HERZEGOVINA**

(MAJORITY AND MINORITY RETURNS)


TABLE 1

 UNHCR The UN Refugee Agency		CANTONS										Total Federation of BiH	Republika Srpska	Brcko District	Grand Total
		Una-Sana	Posavina	Tuzla	Zenica-Doboj	Bosnia-Podrinje	Central Bosnia	Herzegovina-Neretva	West-Herzegovina	Sarajevo	Canton 10				
2004	January	20	6	24	17	21	50	216	2	256	27	639	419		1,058
	February	34	10	5	500	22	90	131	3	93	6	894	216	9	1,119
	March	45	7	45	126	17	48	168		214		670	236	177	1,083
	April														
	May														
	June														
	July														
	August														
	September														
	October														
	November														
	December														
TOTAL		99	23	74	643	60	188	515	5	563	33	2,203	871	186	3,260
Total Minority DPs:		96	23	74	183	60	131	304	5	380	26	1,282	842	186	2,310

SUMMARY OF RECORDED REPATRIATION OF REFUGEES TO BOSNIA AND HERZEGOVINA

(MAJORITY AND MINORITY RETURNS)

TABLE 2

		CANTONS									Total Federation of BiH	Republika Srpska	Brcko District	Grand Total
		Una-Sana	Posavina	Tuzla	Zenica-Doboj	Bosnia-Podrinje	Central Bosnia	Herzegovina-Neretva	West-Herzegovina	Sarajevo				
2004	January	1	2		13	7	19		134		176	61		237
	February	2	10	1	17	60	29		83	23	225	71		296
	March	5	5	1	9	28	22		160		230	54		284
	April													
	May													
	June													
	July													
	August													
	September													
	October													
	November													
	December													
TOTAL		8	17	2	39	95	70		377	23	631	186		817
Total Minority Refugees:		6	12	2	36	88	62		340	23	569	185		754

**RECORDED MINORITY RETURNS FROM 01/01/2004 TO 31/03/2004
IN BOSNIA AND HERZEGOVINA**

FEDERATION OF BiH :

TABLE 3

CANTON 1: UNA-SANA	Bosniacs	Croats	Serbs	Others	Total
Bihac			6		6
Bosanska Krupa			36		36
Bosanski Petrovac			59		59
Kljuc			1		1
Sanski Most					
Velika Kladusa					
Total:			102		102

CANTON 2: POSAVINA	Bosniacs	Croats	Serbs	Others	Total
Domaljevac - Samac					
Odzak	2		25		27
Orasje			8		8
Total:	2		33		35

CANTON 3: TUZLA	Bosniacs	Croats	Serbs	Others	Total
Banovici			5		5
Celic			18		18
Gracanica					
Gradacac			2		2
Kalesija					
Kladanj					
Lukavac			4		4
Sapna			6		6
Srebrenik			6		6
Tuzla			32		32
Teocak			3		3
Total:			76		76

CANTON 4: ZENICA-DOBOJ	Bosniacs	Croats	Serbs	Others	Total
Kakanj		96	3		99
Maglaj			16		16
Olovo			2		2
Tesanj					
Usora					
Vares					
Visoko		2	18		20
Zavidovici		19	52		71
Zenica		2	3		5
Zepce	6				6
Total:	6	119	94		219

CANTON 5: BOSNIA-PODRINJE	Bosniacs	Croats	Serbs	Others	Total
Foca - Ustikolina			2		2
Gorazde			58		58
Pale - Praca					
Total:			60		60

CANTON 6: CENTRAL BOSNIA	Bosniacs	Croats	Serbs	Others	Total
Bugojno		14	35		49
Busovaca					
Donji Vakuf			15		15
Fojnica					
Gornji Vakuf - Uskoplje					
Jajce		63	92		155
Kiseljak					
Novi Travnik					
Travnik					
Vitez					
Total:		77	142		219

CANTON 7: HERZEGOVINA-NERETVA	Bosniacs	Croats	Serbs	Others	Total
Capljina	41		29	1	71
Citluk	16				16
Konjic		87	5	2	94
Mostar East		46	40		86
Mostar West	29		47		76
Neum					
Prozor / Rama	14				14
Stolac	4				4
Ravno			5		5
Total:	104	133	126	3	366

CANTON 8: WEST HERZEGOVINA	Bosniacs	Croats	Serbs	Others	Total
Ljubuski	5				5
Siroki Brijeg					
Total:	5				5

CANTON 9: SARAJEVO	Bosniacs	Croats	Serbs	Others	Total
Centar		9	78		87
Hadzici		4	67		71
Ilidza			38	3	41
Ilijas			92		92
Novi Grad		13	153	11	177
Novo Sarajevo		28	141	22	191
Stari Grad			6		6
Trnovo FBiH			3		3
Vogosca			52		52
Total:		54	630	36	720

CANTON 10:	Bosniacs	Croats	Serbs	Others	Total
Bosansko Grahovo			12		12
Drvar	5				5
Glamoc					
Kupres	15		17		32
Livno					
Total:	20		29		49

	Bosniacs	Croats	Serbs	Others	Total
Total FEDERATION OF BiH :	137	383	1,292	39	1,851

REPUBLIKA SRPSKA :	Bosniacs	Croats	Serbs	Others	Total
Banja Luka	44	4			48
Berkovici	2				2
Bijeljina					
Bosanska Dubica / Kozarska Dubica					
Bosanska Gradiska / Gradiska					
Bosanski / Srpski Brod	4	2			6
Bosanska / Srpska Kostajnica	3				3
Bosanski Novi / Novi Grad	60				60
Bosanski Samac / Samac	10	38			48
Bratunac	42				42
Cajnice	3				3
Derventa	3				3
Doboj	144				144
Foca / Srinje	22				22
Gacko	1				1
Kalinovik					
Kotor Varos					
Han Pijesak	7				7
Laktasi					
Lopare					
Ljubinje					
Milici	21				21
Modrica	119	15			134
Mrkonjic Grad					
Nevesinje					
Odzak / Vukosavlje	6				6
Osmaci					
Pale	5				5
Pelagicevo					
Prijedor	164				164
Prnjavor					
Rogatica	13				13
Rudo	3				3
Sipovo					
Skender Vakuf / Knezevo					
Sokolac	9				9
Srebrenica	60				60
Srpska Ilidza					
Srpsko Gorazde	15				15
Teslic					
Trebinje	5				5
Trnovo RS	4				4
Ugljevik					
Visegrad	45				45
Vlasenica	12				12
Zvornik	142				142
Total Republika Srpska :	968	59			1,027

BRCKO DISTRICT :	Bosniacs	Croats	Serbs	Others	Total
Total Brcko District :	125	52	9		186

	Bosniacs	Croats	Serbs	Others	Total
Total BOSNIA AND HERZEGOVINA* :	1,230	494	1,301	39	3,064

* Source: UNHCR; Municipal Authorities; OHR Brcko District, DPs Associations and NGOs.

RETURNS SUMMARY TO BOSNIA AND HERZEGOVINA FROM 01/01/1996 TO 31/03/2004

TABLE 4

		FEDERATION OF BiH									
		REFUGEES					DPs				
		BOS	CRO	SER	OTH	TOTAL	BOS	CRO	SER	OTH	TOTAL
1	1996	76,385	3,144	552	33	80,114	101,266	447	1,179	21	102,913
	1997	74,552	33,495	2,849	754	111,650	38,821	10,163	3,971	205	53,160
	1998	77,310	22,930	4,307	1,453	106,000	9,041	4,040	6,059	300	19,440
	1999	17,359	5,960	4,370	491	28,180	14,320	5,747	9,649	219	29,935
	2000	4,815	3,498	5,164	569	14,046	9,638	6,660	13,811	172	30,281
	2001	1,966	2,285	9,108	542	13,901	9,058	4,890	24,794	343	39,085
	2002	3,341	2,080	18,079	290	23,790	6,791	4,632	21,108	624	33,155
	2003	897	1,183	5,430	230	7,740	9,356	1,858	14,963	145	26,322
	2004	55	131	419	26	631	1,007	310	873	13	2,203
	TOTAL	256,680	74,706	50,278	4,388	386,052	199,298	38,747	96,407	2,042	336,494

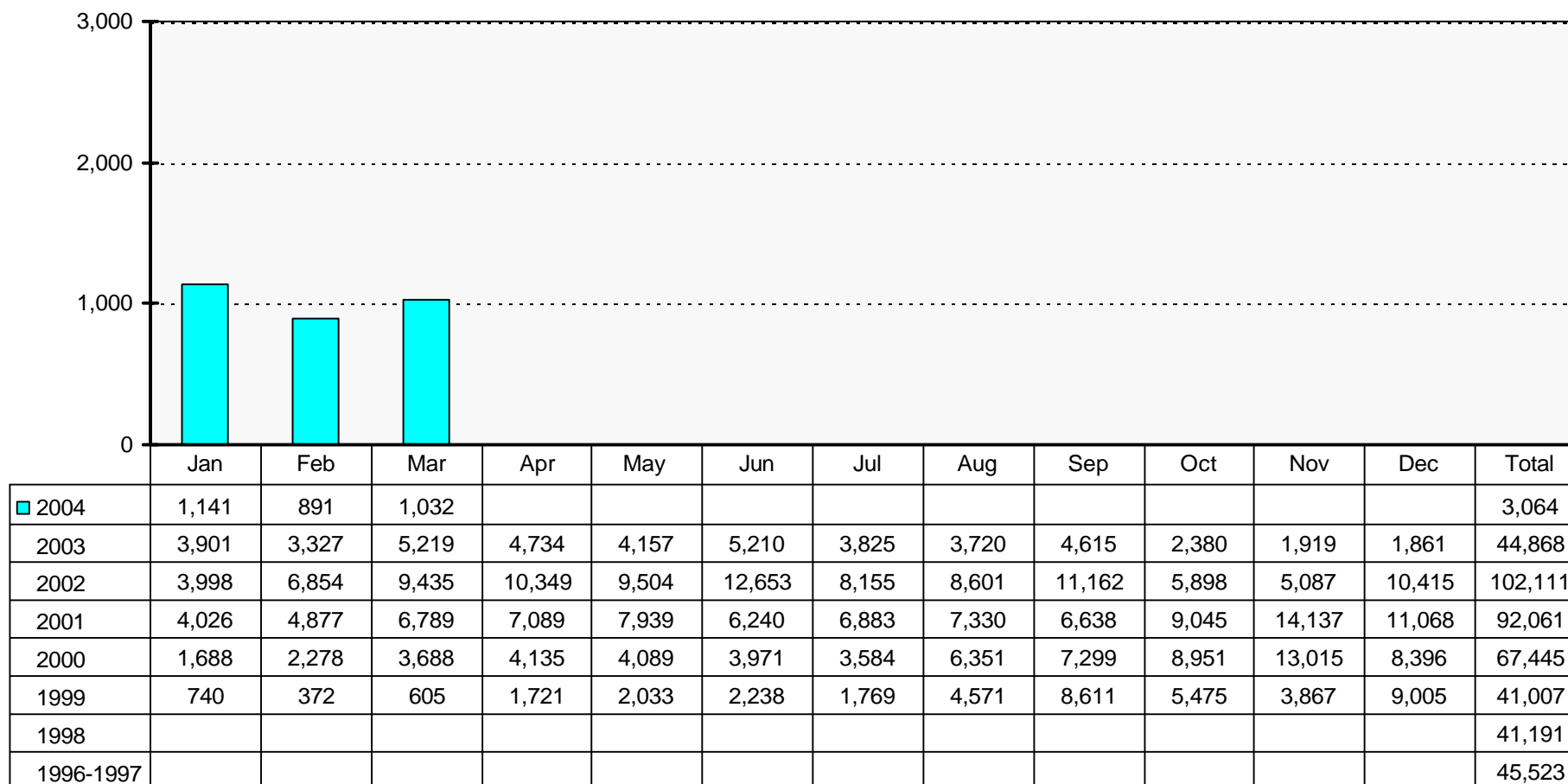
		REPUBLIKA SRPSKA									
		REFUGEES					DPs				
		BOS	CRO	SER	OTH	TOTAL	BOS	CRO	SER	OTH	TOTAL
2	1996			7,925		7,925	136	58	61,613	21	61,828
	1997	204	73	8,287	66	8,630	626	28	4,481		5,135
	1998	1,279	257	2,458	6	4,000	6,765	285	3,080		10,130
	1999	1,081	339	1,962	88	3,470	10,587	1,013	1,666	184	13,450
	2000	2,818	1,336	139	268	4,561	22,461	456	362	277	23,556
	2001	2,676	1,959	47	110	4,792	34,952	471	611	93	36,127
	2002	9,119	2,107	134	99	11,459	29,511	351	585	106	30,553
	2003	4,343	1,609	50	191	6,193	11,803	123	440	7	12,373
	2004	131	54	1		186	837	5	29		871
	TOTAL	21,651	7,734	21,003	828	51,216	117,678	2,790	72,867	688	194,023

		BRCKO DISTRICT									
		REFUGEES					DPs				
		BOS	CRO	SER	OTH	TOTAL	BOS	CRO	SER	OTH	TOTAL
3	2000						4,845	663	2		5,510
	2001						4,032	599	329		4,960
	2002	132	1,746	7		1,885	5,209	336	1,522		7,067
	2003	17	60	2		79	702	286	620		1,608
	2004						125	52	9		186
	TOTAL	149	1,806	9		1,964	14,913	1,936	2,482		19,331

		TOTAL BOSNIA AND HERZEGOVINA									
		REFUGEES					DPs				
		BOS	CRO	SER	OTH	TOTAL	BOS	CRO	SER	OTH	TOTAL
1+2+3	1996	76,385	3,144	8,477	33	88,039	101,402	505	62,792	42	164,741
	1997	74,756	33,568	11,136	820	120,280	39,447	10,191	8,452	205	58,295
	1998	78,589	23,187	6,765	1,459	110,000	15,806	4,325	9,139	300	29,570
	1999	18,440	6,299	6,332	579	31,650	24,907	6,760	11,315	403	43,385
	2000	7,633	4,834	5,303	837	18,607	36,944	7,779	14,175	449	59,347
	2001	4,642	4,244	9,155	652	18,693	48,042	5,960	25,734	436	80,172
	2002	12,592	5,933	18,220	389	37,134	41,511	5,319	23,215	730	70,775
	2003	5,257	2,852	5,482	421	14,012	21,861	2,267	16,023	152	40,303
	2004	186	185	420	26	817	1,969	367	911	13	3,260
	TOTAL	278,480	84,246	71,290	5,216	439,232	331,889	43,473	171,756	2,730	549,848

Minority Returns* 2004

Table 5

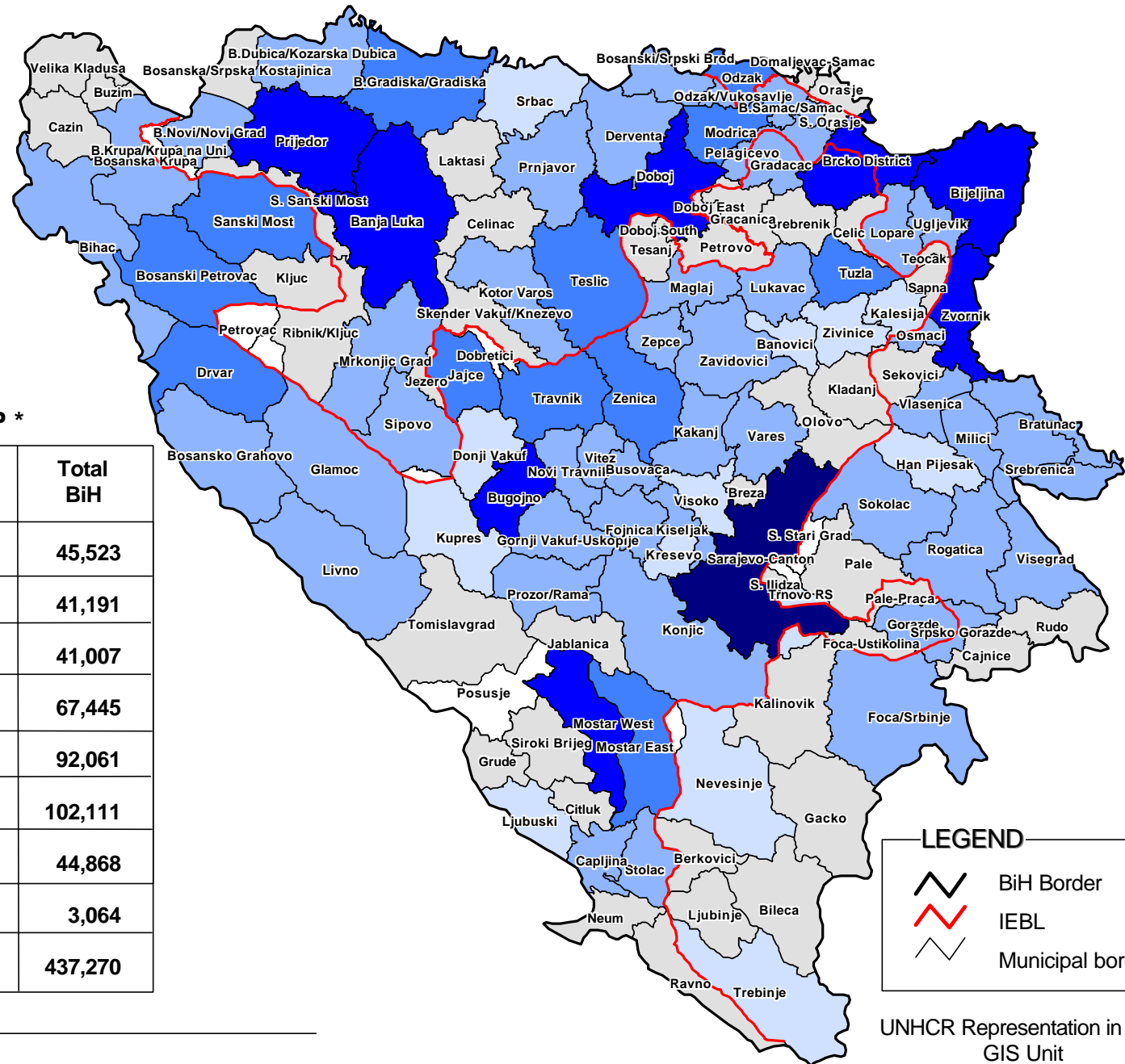
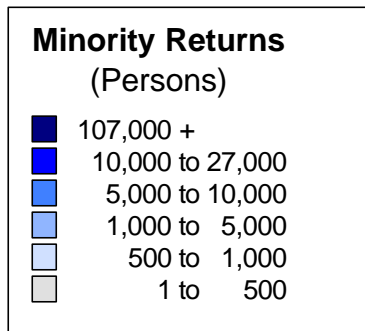


GRAND TOTAL : 437,270

* "Minority" returns is a purely technical term referring to persons who have returned to their pre-conflict municipalities, currently dominated by (an)other constituent people(s) of BiH.

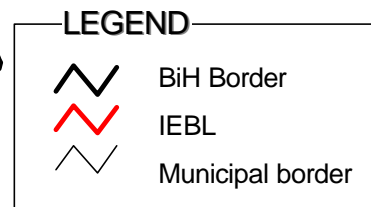
Updated: 31 March 2004

TOTAL MINORITY RETURNS IN/TO BiH FROM 1996 TO 31 MARCH 2004



Total minority returns since GFAP *

Year	Federation of BiH	Republika Srpska	Brcko District	Total BiH
1996 - 1997	44,398	1,125		45,523
1998	32,605	8,586		41,191
1999	27,987	13,020		41,007
2000	34,377	27,558	5,510	67,445
2001	46,848	40,253	4,960	92,061
2002	51,814	41,345	8,952	102,111
2003	25,130	18,051	1,687	44,868
2004	1,851	1,027	186	3,064
Total :	265,010	150,965	21,295	437,270



* GFAP - General Framework Agreement for Peace in BiH



The boundaries displayed on this map do not imply official recognition by the United Nations

NUMBER OF MINE VICTIMS BY YEAR
(MONTHLY DISTRIBUTION)

	Year										Total
	1996	1997	1998	1999	2000	2001	2002	2003	2004		
January	64	15	13	15	3	5	5	4	0		124
February	34	17	9	9	7	3	10	4	3		96
March	103	55	35	9	13	14	9	16	3		257
April	105	40	22	11	5	13	9	3			208
May	60	32	15	7	8	8	5	2			137
June	58	30	10	4	10	10	3	3			128
July	57	27	11	7	13	13	3	1			132
August	46	26	12	3	17	4	4	6			118
September	29	13	4	10	2	6	8	2			74
October	32	20	12	5	10	8	9	6			102
November	24	8	2	6	6	2	5	6			59
December	20	7	4	9	6	1	2	1			50
Total	632	290	149	95	100	87	72	54	6		1,485

MINE VICTIMS BY AGE

	Year										Total
	1996	1997	1998	1999	2000	2001	2002	2003	2004		
Children (0-18)	151	55	22	19	29	12	19	9	1		317
Adults (19-60)	412	202	100	64	64	59	48	37	5		991
Elderly (over 60)	40	20	17	10	7	7	5	8	0		114
Unknown	29	13	10	2	0	9	0	0	0		63
Total	632	290	149	95	100	87	72	54	6		1,485

CASUALTIES BY ORIGIN

	Year										Total
	1996	1997	1998	1999	2000	2001	2002	2003	2004		
Displaced Persons	90	51	32	31	14	12	5	5	1		241
Returnees	65	32	18	7	19	20	13	19	2		195
Local residents	477	207	99	57	67	55	54	30	3		1,049
Total	632	290	149	95	100	87	72	54	6		1,485

FATAL AND NON FATAL INJURIES BY YEAR

	Year										Total
	1996	1997	1998	1999	2000	2001	2002	2003	2004		
Fatal	17.5%	30.2%	40.0%	39.6%	35.0%	36.8%	36.1%	42.6%	50.0%		36.4%
Non fatal	82.5%	69.8%	60.0%	60.4%	65.0%	63.2%	63.9%	57.4%	50.0%		63.6%