



# STATISTICS PACKAGE

[www.unhcr.ba](http://www.unhcr.ba)


Sarajevo

31 August 2004

## SUMMARY OF RECORDED RETURNS OF DISPLACED PERSONS WITHIN BOSNIA AND HERZEGOVINA

(MAJORITY AND MINORITY RETURNS)


TABLE 1

		CANTONS										Total Federation of BiH	Republika Srpska	Brcko District	Grand Total
		Una-Sana	Posavina	Tuzla	Zenica-Doboj	Bosnia-Podrinje	Central Bosnia	Herzegovina-Neretva	West-Herzegovina	Sarajevo	Canton 10				
2004	January	20	6	24	17	21	50	216	2	256	27	639	419		1,058
	February	34	10	5	500	22	90	131	3	93	6	894	216	9	1,119
	March	45	7	45	126	17	48	168		214		670	236	177	1,083
	April	83	9	127	138	25	56	184		679	19	1,320	1,710	54	3,084
	May	59	7	11	222	16	23	85		180	14	617	2,093	2	2,712
	June	38	4	116	47	15	7	50		2,672		2,949	824		3,773
	July	41	5	50	27	22		5		105	14	269	609	31	909
	August	76	10	15	37	15	7	20		100		280	597		877
	September														
	October														
	November														
	December														
<b>TOTAL</b>		<b>396</b>	<b>58</b>	<b>393</b>	<b>1,114</b>	<b>153</b>	<b>281</b>	<b>859</b>	<b>5</b>	<b>4,299</b>	<b>80</b>	<b>7,638</b>	<b>6,704</b>	<b>273</b>	<b>14,615</b>
<b>Total Minority DPs:</b>		<b>318</b>	<b>58</b>	<b>387</b>	<b>408</b>	<b>153</b>	<b>190</b>	<b>598</b>	<b>5</b>	<b>1,218</b>	<b>73</b>	<b>3,408</b>	<b>6,102</b>	<b>273</b>	<b>9,783</b>

## SUMMARY OF RECORDED REPATRIATION OF REFUGEES TO BOSNIA AND HERZEGOVINA

(MAJORITY AND MINORITY RETURNS)

TABLE 2

 <b>UNHCR</b> The UN Refugee Agency		CANTONS									Total Federation of BiH	Republika Srpska	Brcko District	Grand Total	
		Una-Sana	Posavina	Tuzla	Zenica-Doboj	Bosnia-Podrinje	Central Bosnia	Herzegovina-Neretva	West-Herzegovina	Sarajevo					Canton 10
<b>2004</b>	January	1	2		13		7	19		134		176	61		237
	February	2	10	2	17		60	29		83	23	226	71		297
	March	5	5		9		28	22		160		229	54		283
	April	3		1	5		20	2		124	30	185	67		252
	May	9		5						70	1	85	63		148
	June	3			5			4		109		121	88		209
	July	5			13			20		70	1	109	197		306
	August	13	10		14		7	10		22		76	94		170
	September														
	October														
	November														
	December														
<b>TOTAL</b>		<b>41</b>	<b>27</b>	<b>8</b>	<b>76</b>		<b>122</b>	<b>106</b>		<b>772</b>	<b>55</b>	<b>1,207</b>	<b>695</b>		<b>1,902</b>
<b>Total Minority Refugees:</b>		<b>25</b>	<b>14</b>	<b>5</b>	<b>63</b>		<b>104</b>	<b>89</b>		<b>700</b>	<b>55</b>	<b>1,055</b>	<b>691</b>		<b>1,746</b>

**RECORDED MINORITY RETURNS FROM 01/01/2004 TO 31/08/2004  
IN BOSNIA AND HERZEGOVINA**

**FEDERATION OF BiH :**

**TABLE 3**

<b>CANTON 1: UNA-SANA</b>	<b>Bosniacs</b>	<b>Croats</b>	<b>Serbs</b>	<b>Others</b>	<b>Total</b>
Bihac			21		21
Bosanska Krupa			123		123
Bosanski Petrovac			197		197
Kljuc			2		2
Sanski Most					
Velika Kladusa					
<b>Total:</b>			343		343

<b>CANTON 2: POSAVINA</b>	<b>Bosniacs</b>	<b>Croats</b>	<b>Serbs</b>	<b>Others</b>	<b>Total</b>
Domaljevac - Samac					
Odzak	4		51		55
Orasje			17		17
<b>Total:</b>	4		68		72

<b>CANTON 3: TUZLA</b>	<b>Bosniacs</b>	<b>Croats</b>	<b>Serbs</b>	<b>Others</b>	<b>Total</b>
Banovici			5		5
Celic			18		18
Gracanica					
Gradacac			7		7
Kalesija					
Kladanj					
Lukavac			45		45
Sapna			243		243
Srebrenik			7		7
Tuzla			64		64
Teocak			3		3
<b>Total:</b>			392		392

<b>CANTON 4: ZENICA-DOBOJ</b>	<b>Bosniacs</b>	<b>Croats</b>	<b>Serbs</b>	<b>Others</b>	<b>Total</b>
Breza			1		1
Kakanj		122	12	11	145
Maglaj		6	28		34
Olovo			23		23
Usora					
Vares		35	5		40
Visoko		6	28		34
Zavidovici		27	129		156
Zenica		8	12		20
Zepce	10	8			18
<b>Total:</b>	10	212	238	11	471

<b>CANTON 5: BOSNIA-PODRINJE</b>	<b>Bosniacs</b>	<b>Croats</b>	<b>Serbs</b>	<b>Others</b>	<b>Total</b>
Foca - Ustikolina			8		8
Gorazde			142		142
Pale - Praca			3		3
<b>Total:</b>			153		153

<b>CANTON 6: CENTRAL BOSNIA</b>	<b>Bosniacs</b>	<b>Croats</b>	<b>Serbs</b>	<b>Others</b>	<b>Total</b>
Bugojno		18	36		54
Busovaca					
Donji Vakuf			22		22
Fojnica					
Gornji Vakuf - Uskoplje					
Jajce		100	118		218
Kiseljak					
Novi Travnik					
Travnik					
Vitez					
<b>Total:</b>		118	176		294

<b>CANTON 7: HERZEGOVINA-NERETVA</b>	<b>Bosniacs</b>	<b>Croats</b>	<b>Serbs</b>	<b>Others</b>	<b>Total</b>
Capljina	132		48	1	181
Citluk	16				16
Konjic		109	24	2	135
Mostar	62	64	152		278
Neum					
Prozor / Rama	14				14
Stolac	43		9		52
Ravno			11		11
<b>Total:</b>	267	173	244	3	687

<b>CANTON 8: WEST HERZEGOVINA</b>	<b>Bosniacs</b>	<b>Croats</b>	<b>Serbs</b>	<b>Others</b>	<b>Total</b>
Ljubuski	5				5
Siroki Brijeg					
<b>Total:</b>	5				5

<b>CANTON 9: SARAJEVO</b>	<b>Bosniacs</b>	<b>Croats</b>	<b>Serbs</b>	<b>Others</b>	<b>Total</b>
Centar		36	262	6	304
Hadzici		4	124	3	131
Ilidza		6	153	7	166
Ilijas		16	221		237
Novi Grad		32	387	21	440
Novo Sarajevo		63	358	34	455
Stari Grad			39	3	42
Trnovo FBiH			44		44
Vogosca			96	3	99
<b>Total:</b>		157	1,684	77	1,918

<b>CANTON 10:</b>	<b>Bosniacs</b>	<b>Croats</b>	<b>Serbs</b>	<b>Others</b>	<b>Total</b>
Bosansko Grahovo			20		20
Drvar	5				5
Glamoc	33		38		71
Kupres	15		17		32
Livno					
<b>Total:</b>	53		75		128

	<b>Bosniacs</b>	<b>Croats</b>	<b>Serbs</b>	<b>Others</b>	<b>Total</b>
<b>Total FEDERATION OF BiH :</b>	339	660	3,373	91	4,463

<b>REPUBLIKA SRPSKA :</b>	<b>Bosniacs</b>	<b>Croats</b>	<b>Serbs</b>	<b>Others</b>	<b>Total</b>
Banja Luka	121	6			127
Berkovici	3				3
Bijeljina	10				10
Bosanska Dubica / Kozarska Dubica	1				1
Bosanska Gradiska / Gradiska					
Bosanski / Srpski Brod	7	6			13
Bosanska / Srpska Kostajnica	12				12
Bosanski Novi / Novi Grad	97				97
Bosanski Samac / Samac	29	76			105
Bratunac	750				750
Cajnice	20				20
Derventa	16				16
Doboj	328				328
Foca / Srbinje	76				76
Gacko	6				6
Kalinovik	3				3
Kotor Varos	1,150				1,150
Han Pijesak	7				7
Laktasi					
Lopare					
Ljubinje					
Milici	456				456
Modrica	232	32			264
Mrkonjic Grad					
Nevesinje					
Odzak / Vukosavlje	16	3			19
Osmaci					
Pale	18				18
Pelagicevo		4			4
Prijedor	788				788
Prnjavor					
Rogatica	48				48
Rudo	19				19
Sekovici	36				36
Skender Vakuf / Knezevo					
Sokolac	33				33
Srebrenica	690				690
Srpska Ilidza					
Srpsko Gorazde	43				43
Teslic	47	3			50
Trebinje	19				19
Trnovo RS	12				12
Ugljevik					
Visegrad	90				90
Vlasenica	117				117
Zvornik	1,363				1,363
<b>Total Republika Srpska :</b>	6,663	130			6,793

<b>BRCKO DISTRICT :</b>	<b>Bosniacs</b>	<b>Croats</b>	<b>Serbs</b>	<b>Others</b>	<b>Total</b>
<b>Total Brcko District :</b>	208	56	9		273

	<b>Bosniacs</b>	<b>Croats</b>	<b>Serbs</b>	<b>Others</b>	<b>Total</b>
<b>Total BOSNIA AND HERZEGOVINA* :</b>	7,210	846	3,382	91	11,529

\* Source: UNHCR; Municipal Authorities; OHR Brcko District, DPs Associations and NGOs.

## RETURNS SUMMARY TO BOSNIA AND HERZEGOVINA FROM 01/01/1996 TO 31/08/2004

TABLE 4

		FEDERATION OF BiH									
		REFUGEES					DPs				
		BOS	CRO	SER	OTH	TOTAL	BOS	CRO	SER	OTH	TOTAL
1	1996	76,385	3,144	552	33	80,114	101,266	447	1,179	21	102,913
	1997	74,552	33,495	2,849	754	111,650	38,821	10,163	3,971	205	53,160
	1998	77,310	22,930	4,307	1,453	106,000	9,041	4,040	6,059	300	19,440
	1999	17,359	5,960	4,370	491	28,180	14,320	5,747	9,649	219	29,935
	2000	4,815	3,498	5,164	569	14,046	9,638	6,660	13,811	172	30,281
	2001	1,966	2,285	9,108	542	13,901	9,058	4,890	24,794	343	39,085
	2002	3,341	2,080	18,079	290	23,790	6,791	4,632	21,108	624	33,155
	2003	897	1,183	5,430	230	7,740	9,356	1,858	14,963	145	26,322
	2004	130	219	801	57	1,207	4,507	519	2,577	35	7,638
	TOTAL	256,755	74,794	50,660	4,419	386,628	202,798	38,956	98,111	2,064	341,929

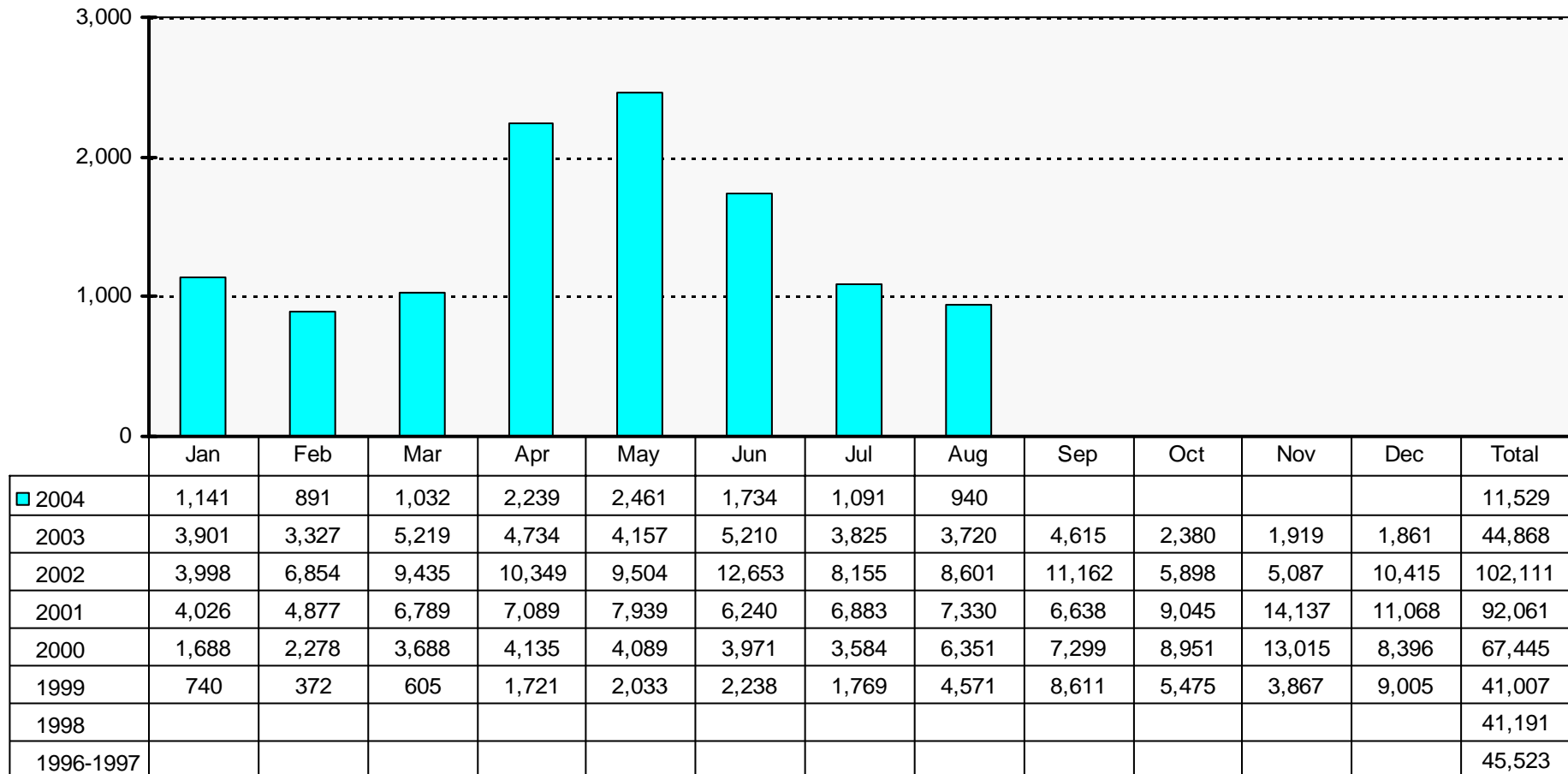
		REPUBLIKA SRPSKA									
		REFUGEES					DPs				
		BOS	CRO	SER	OTH	TOTAL	BOS	CRO	SER	OTH	TOTAL
2	1996			7,925		7,925	136	58	61,613	21	61,828
	1997	204	73	8,287	66	8,630	626	28	4,481		5,135
	1998	1,279	257	2,458	6	4,000	6,765	285	3,080		10,130
	1999	1,081	339	1,962	88	3,470	10,587	1,013	1,666	184	13,450
	2000	2,818	1,336	139	268	4,561	22,461	456	362	277	23,556
	2001	2,676	1,959	47	110	4,792	34,952	471	611	93	36,127
	2002	9,119	2,107	134	99	11,459	29,511	351	585	106	30,553
	2003	4,343	1,609	50	191	6,193	11,803	123	440	7	12,373
	2004	572	119	4		695	6,091	11	602		6,704
	TOTAL	22,092	7,799	21,006	828	51,725	122,932	2,796	73,440	688	199,856

		BRCKO DISTRICT									
		REFUGEES					DPs				
		BOS	CRO	SER	OTH	TOTAL	BOS	CRO	SER	OTH	TOTAL
3	2000						4,845	663	2		5,510
	2001						4,032	599	329		4,960
	2002	132	1,746	7		1,885	5,209	336	1,522		7,067
	2003	17	60	2		79	702	286	620		1,608
	2004						208	56	9		273
	TOTAL	149	1,806	9		1,964	14,996	1,940	2,482		19,418

		TOTAL BOSNIA AND HERZEGOVINA									
		REFUGEES					DPs				
		BOS	CRO	SER	OTH	TOTAL	BOS	CRO	SER	OTH	TOTAL
1+2+3	1996	76,385	3,144	8,477	33	88,039	101,402	505	62,792	42	164,741
	1997	74,756	33,568	11,136	820	120,280	39,447	10,191	8,452	205	58,295
	1998	78,589	23,187	6,765	1,459	110,000	15,806	4,325	9,139	300	29,570
	1999	18,440	6,299	6,332	579	31,650	24,907	6,760	11,315	403	43,385
	2000	7,633	4,834	5,303	837	18,607	36,944	7,779	14,175	449	59,347
	2001	4,642	4,244	9,155	652	18,693	48,042	5,960	25,734	436	80,172
	2002	12,592	5,933	18,220	389	37,134	41,511	5,319	23,215	730	70,775
	2003	5,257	2,852	5,482	421	14,012	21,861	2,267	16,023	152	40,303
	2004	702	338	805	57	1,902	10,806	586	3,188	35	14,615
	TOTAL	278,996	84,399	71,675	5,247	440,317	340,726	43,692	174,033	2,752	561,203

# Minority Returns\* 2004

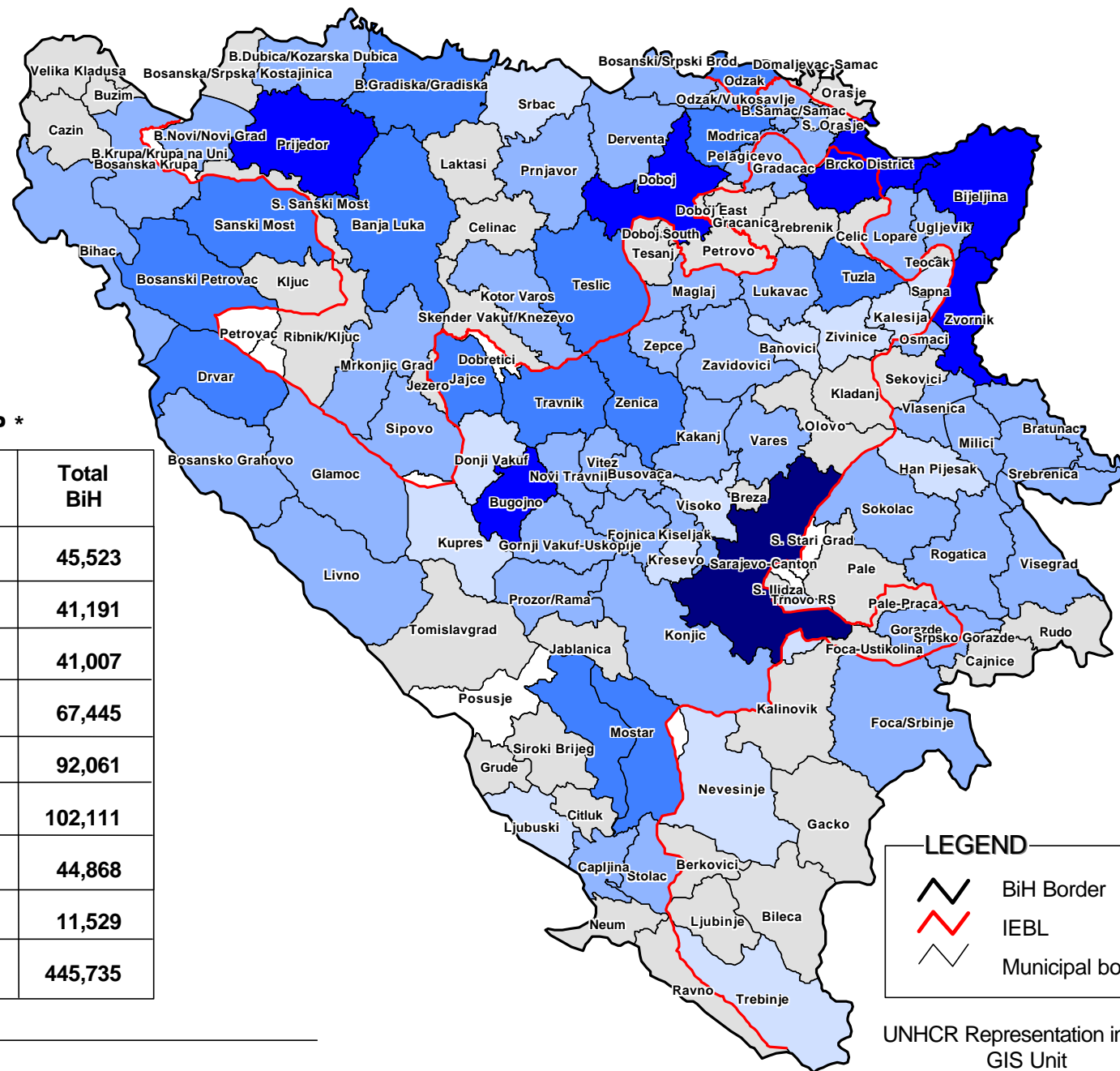
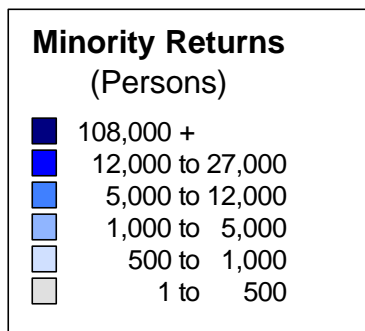
Table 5



**GRAND TOTAL : 445,735**

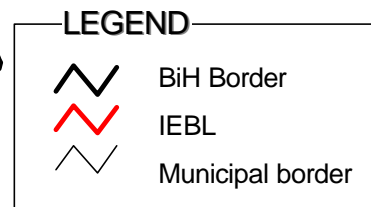
\* "Minority" returns is a purely technical term referring to persons who have returned to their pre-conflict municipalities, currently dominated by (an)other constituent people(s) of BiH.

# TOTAL MINORITY RETURNS IN/TO BiH FROM 1996 TO 31 AUGUST 2004



**Total minority returns since GFAP \***

Year	Federation of BiH	Republika Srpska	Brcko District	Total BiH
1996 - 1997	44,398	1,125		45,523
1998	32,605	8,586		41,191
1999	27,987	13,020		41,007
2000	34,377	27,558	5,510	67,445
2001	46,848	40,253	4,960	92,061
2002	51,814	41,345	8,952	102,111
2003	25,130	18,051	1,687	44,868
2004	4,463	6,793	273	11,529
<b>Total :</b>	<b>267,622</b>	<b>156,731</b>	<b>21,382</b>	<b>445,735</b>



\* GFAP - General Framework Agreement for Peace in BiH



The boundaries displayed on this map do not imply official recognition by the United Nations

**NUMBER OF MINE VICTIMS BY YEAR  
(MONTHLY DISTRIBUTION)**

	Year									Total
	1996	1997	1998	1999	2000	2001	2002	2003	2004	
January	64	15	13	15	3	5	5	4	0	124
February	34	17	9	9	7	3	10	4	3	96
March	103	55	35	9	13	14	9	16	4	258
April	105	40	22	11	5	13	9	3	2	210
May	60	32	15	7	8	8	5	2	6	143
June	58	30	10	4	10	10	3	3	3	131
July	57	27	11	7	13	13	3	1	6	138
August	46	26	12	3	17	4	4	6	4	122
September	29	13	4	10	2	6	8	2		74
October	32	20	12	5	10	8	9	6		102
November	24	8	2	6	6	2	5	6		59
December	20	7	4	9	6	1	2	1		50
<b>Total</b>	<b>632</b>	<b>290</b>	<b>149</b>	<b>95</b>	<b>100</b>	<b>87</b>	<b>72</b>	<b>54</b>	<b>28</b>	<b>1,507</b>

**FATAL AND NON FATAL INJURIES BY YEAR**

	Year									Total
	1996	1997	1998	1999	2000	2001	2002	2003	2004	
Fatal	17.5%	30.2%	40.0%	39.6%	35.0%	36.8%	36.1%	42.6%	35.7%	34.8%
Non fatal	82.5%	69.8%	60.0%	60.4%	65.0%	63.2%	63.9%	57.4%	64.3%	65.2%

**MINE VICTIMS BY AGE**

	Year									Total
	1996	1997	1998	1999	2000	2001	2002	2003	2004	
Children (0-18)	151	55	22	19	29	12	19	9	3	319
Adults (19-60)	412	202	100	64	64	59	48	37	23	1,009
Elderly (over 60)	40	20	17	10	7	7	5	8	2	116
Unknown	29	13	10	2	0	9	0	0	0	63
<b>Total</b>	<b>632</b>	<b>290</b>	<b>149</b>	<b>95</b>	<b>100</b>	<b>87</b>	<b>72</b>	<b>54</b>	<b>28</b>	<b>1,507</b>

**CASUALTIES BY ORIGIN**

	Year									Total
	1996	1997	1998	1999	2000	2001	2002	2003	2004	
Displaced Persons	90	51	32	31	14	12	5	5	1	241
Returnees	65	32	18	7	19	20	13	19	3	196
Local residents	477	207	99	57	67	55	54	30	24	1,070
<b>Total</b>	<b>632</b>	<b>290</b>	<b>149</b>	<b>95</b>	<b>100</b>	<b>87</b>	<b>72</b>	<b>54</b>	<b>28</b>	<b>1,507</b>